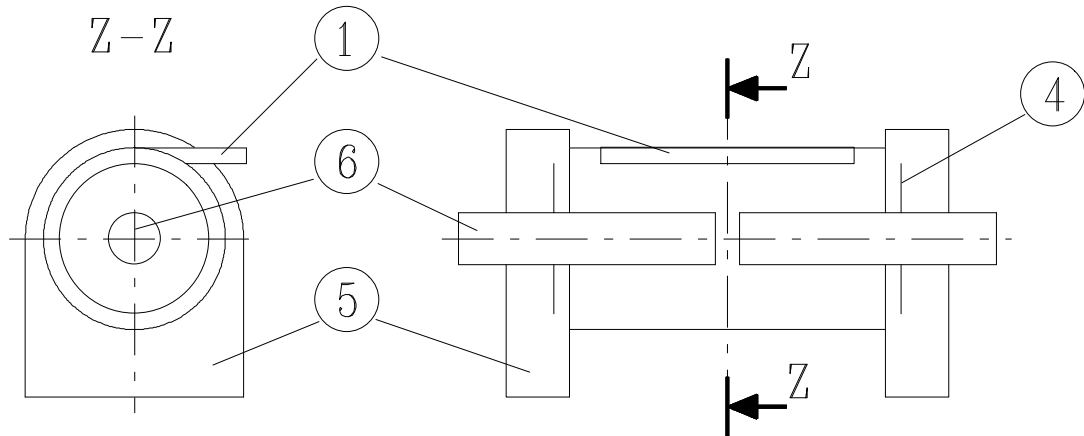
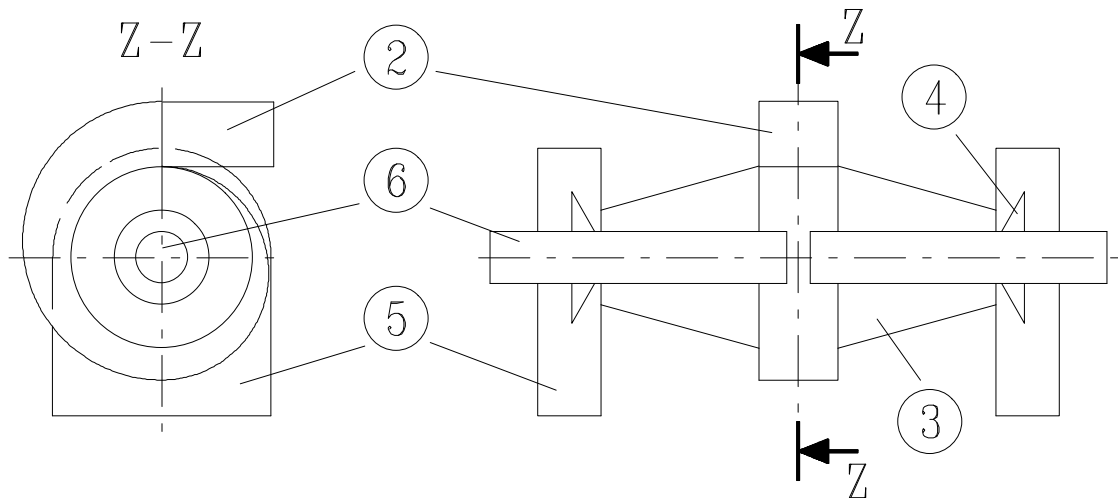


Different types of experimentally investigated symmetrical double cyclone separators — I

Symmetrical vortex chamber ZA :



Symmetrical double cyclone ZS (spiral inlet) :



- | | |
|--------------------------------------|----------------------------------------------------------------|
| ① tangential inlet | ④ apex cone attached to the outer radius of vortex finder tube |
| ② spiral inlet | ⑤ particle settling chamber |
| ③ conical part of the vortex chamber | ⑥ vortex finder, clean gas outlet |